

Fixture Type: _____

Catalog Number: _____

Project: _____

Location: _____

H Track

Line Voltage Track Extension

Model & Size	Finish
H18 18"	BK Black
H24 24"	BN Brushed Nickel
H36 36"	DB Dark Bronze
H48 48"	WT White

Example: **H18-BK**

DESCRIPTION

120V Track systems are modular and can be designed for multiple applications in nearly any interior environment. H Track extensions are extension rods used to drop a line voltage fixture to a specified distance below the track surface. H track extensions may only work with H track systems and on Line Voltage fixtures.

FEATURES

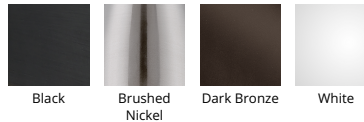
- Extends H Track System line voltage track heads
- 5 year warranty

SPECIFICATIONS

Input: 120 VAC, 50/60Hz
Finish: Electrostatically Powder Coated Black, Electroplated Brushed Nickel, Dark Bronze, White
Operating Temp: -4°F to 104°F (-20°C to 40°C)
Standards: UL, cUL, Dry Location Listed



FINISHES



WAC LIGHTING

H Track

120V Single Circuit Track Section

Model & Size	Finish
HT2 2'	BK Black
HT4 4'	BN Brushed Nickel
HT6 6'	DB Dark Bronze
HT8 8'	WT White

Example: **HT2-BK**

DESCRIPTION

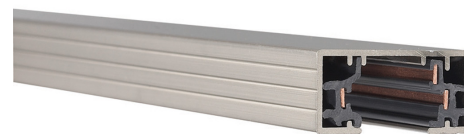
120V Track systems are modular and can be designed for multiple applications in nearly any interior environment. Choose from hundreds of compatible track fixtures and pendants by WAC Lighting to install on track systems. Versatile yet sturdy, track systems can be surface mounted or suspended from ceilings, enabling the lighting design to adapt to changing styles and spaces. Track may be field cut to size and combine power connectors, accessories, and suspension options to build a complete system.

FEATURES

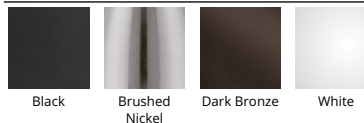
- May be field cut and easily installed on a variety of surfaces
- End caps and mounting hardware included
- Retrofits into many popular track systems on the market today
- 5 year warranty

SPECIFICATIONS

Construction:	Aluminum extrusion with copper bus wire
Power:	1920W
Input:	120 VAC, 50/60Hz
Finish:	Electrostatically Powder Coated White, Dark Bronze, Electroplated Brushed Nickel, Black
Operating Temp:	-4°F to 104°F (-20°C to 40°C)
Standards:	UL, cUL, Dry Location Listed



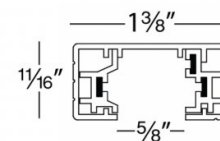
FINISHES



LINE DRAWING



H System Adapter



H Track System

Fixture Type: _____

Catalog Number: _____

Project: _____

Location: _____