

Fixture Type: \_\_\_\_\_

Catalog Number: \_\_\_\_\_

Project: \_\_\_\_\_

Location: \_\_\_\_\_

## Flexrail1™ End Cap

System Type	Model	Finish
HM1	EC	PT Platinum

Example: **HM1-EC-PT**

### DESCRIPTION

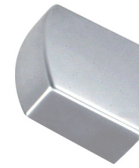
Offering a slender profile that is easy to assemble and customize, Flexrail™ integrates art and technology into a flexible line voltage system bendable in the field to navigate curves for endless design possibilities. The flexible upgrade to traditional track creates bold, eye-catching three dimensional configurations while challenging ceilings are transformed into dramatic scenes with selections from hundreds of low and line voltage LED Quick Connect pendants and fixtures. Unlike conventional monorail systems with bulky transformers, Flexrail™ can be powered directly through a junction box or 120V source. A single circuit of Flexrail™ can accommodate dozens of LED pendants or rail heads. This sturdy, yet distinctive system is engineered for the most demanding residential, retail, or commercial applications where versatility, high performance and robust aesthetics are necessary.

### FEATURES

- Caps open ends of Flexrail1 sections
- 5 year warranty

### SPECIFICATIONS

Finish:	Platinum
Operating Temp:	-4°F to 104°F (-20°C to 40°C)
Standards:	UL, cUL, Dry Location Listed



### FINISHES



Platinum

Fixture Type: \_\_\_\_\_

Catalog Number: \_\_\_\_\_

Project: \_\_\_\_\_

Location: \_\_\_\_\_

## Flexrail1™

### Rail Sections

System Type	Model	Size	Finish
HM1	T	4' 8'	PT Platinum

Example: **HM1-T4-PT**

#### DESCRIPTION

Offering a slender profile that is easy to assemble and customize, Flexrail™ integrates art and technology into a flexible line voltage system bendable in the field to navigate curves for endless design possibilities. The flexible upgrade to traditional track creates bold, eye-catching three dimensional configurations while challenging ceilings are transformed into dramatic scenes with selections from hundreds of low and line voltage LED Quick Connect pendants and fixtures. Unlike conventional monorail systems with bulky transformers, Flexrail™ can be powered directly through a junction box or 120V source. A single circuit of Flexrail™ can accommodate dozens of LED pendants or rail heads. This sturdy, yet distinctive system is engineered for the most demanding residential, retail, or commercial applications where versatility, high performance and robust aesthetics are necessary.

#### FEATURES

- Bendable 120V monorail with 1920W maximum
- Includes two matching end caps
- The suspension rods for Flexrail1 are field cuttable or extendable (96" max). Rods are available for most ceiling types.
- Shaping rail before mounting on the ceiling allows you to determine the best location for standoffs. Use a bending machine (HM1-BM) for professional installations.
- The HM1-EN50 Quick Connect transformer adapter allows the use of any Quick Connect element on the Flexrail1 system. Ordered separately.
- Rail can be put together to any length desired. The use of the "I" connectors will be required when connecting sections of track. The total load of a Flexrail1 system can be up to 1920 watts.
- 5 year warranty

#### SPECIFICATIONS

<b>Input:</b>	120 VAC, 50/60Hz
<b>Mounting:</b>	Minimum three supports for 8 foot section, two for 4 foot section. Custom length suspensions are possible by using cables or suspension rods with rod couplers.
<b>Finish:</b>	Platinum
<b>Operating Temp:</b>	-4°F to 104°F (-20°C to 40°C)
<b>Standards:</b>	UL, cUL, Dry Location Listed



#### FINISHES



Platinum